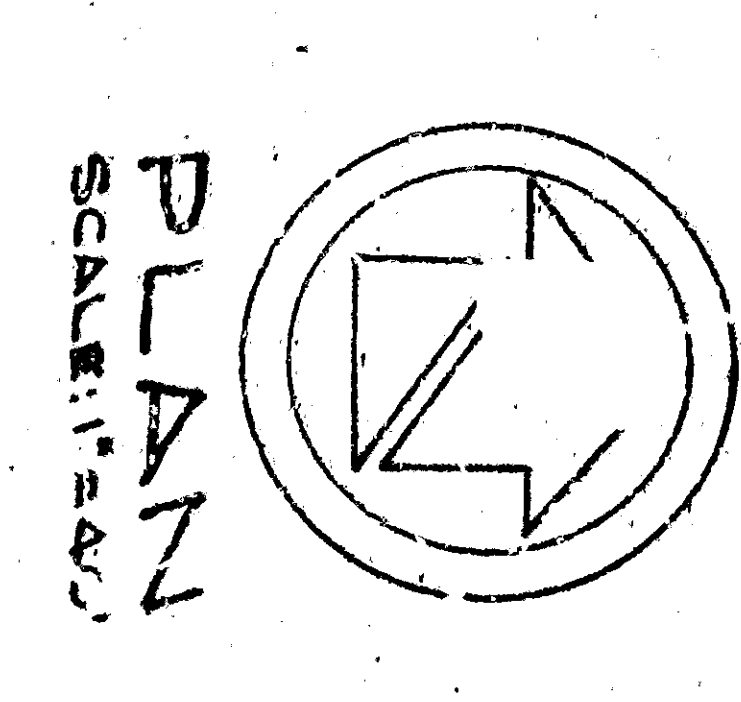
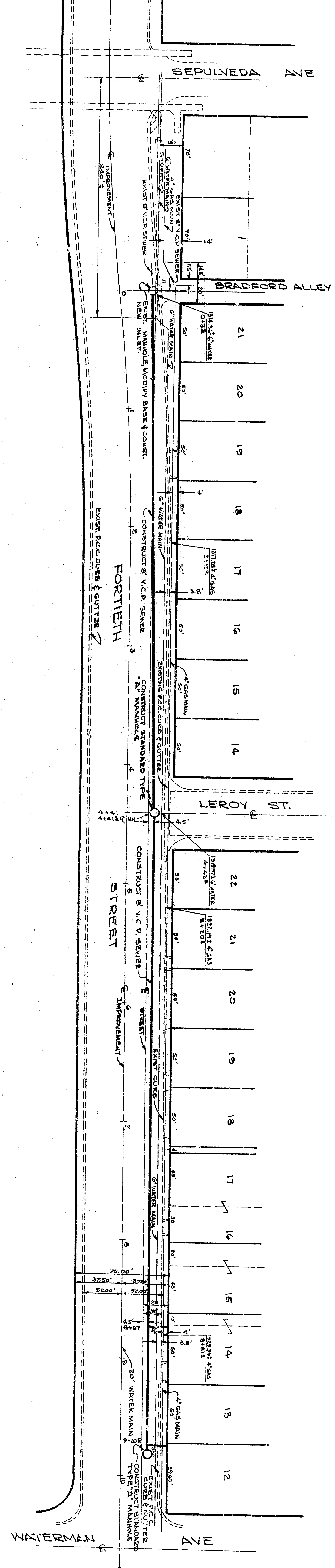
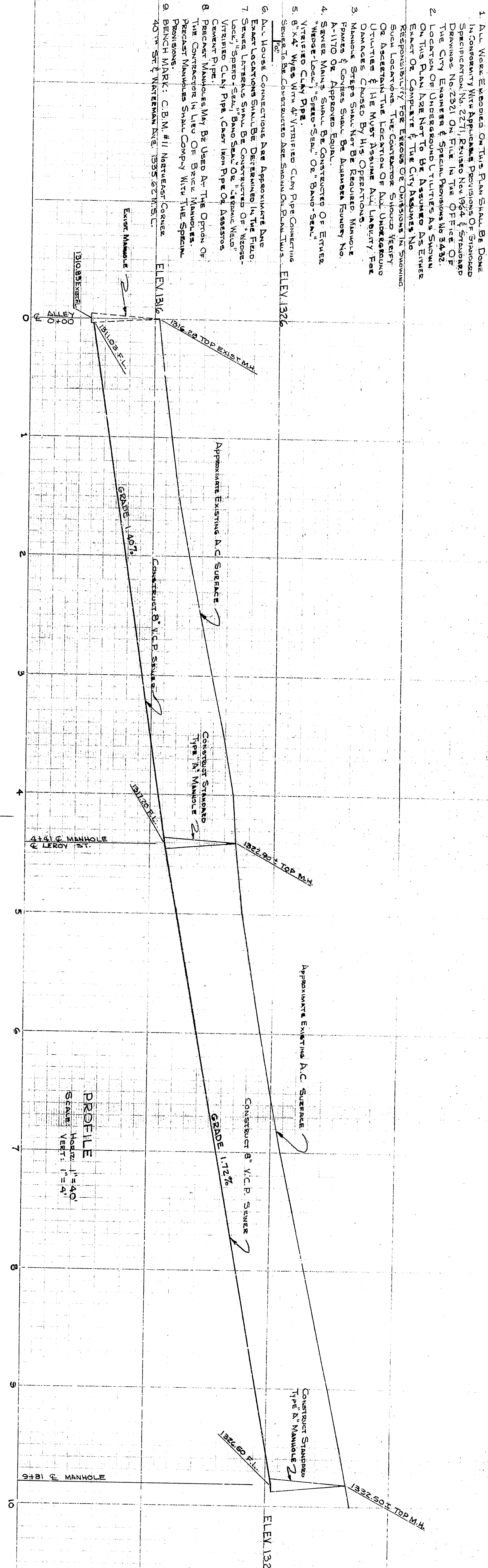


GENERAL NOTES:

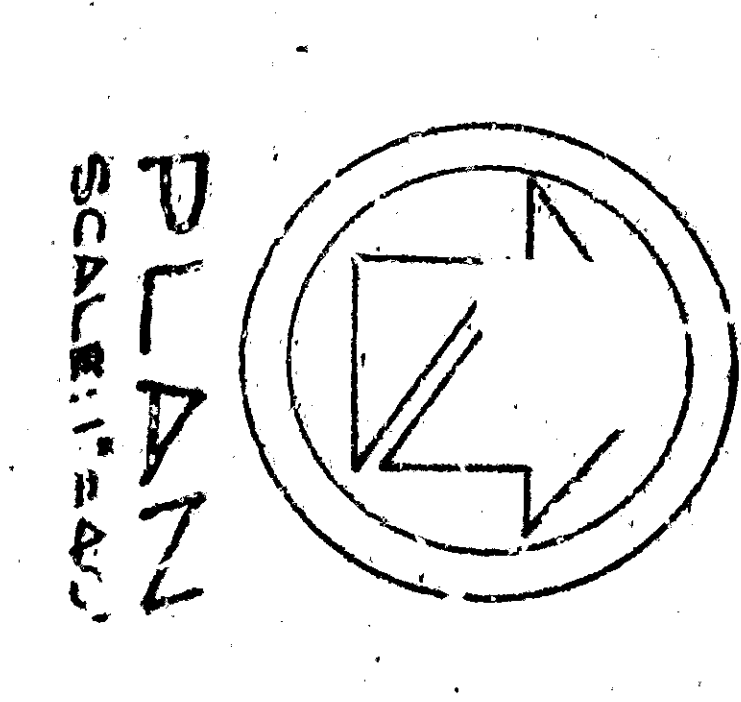
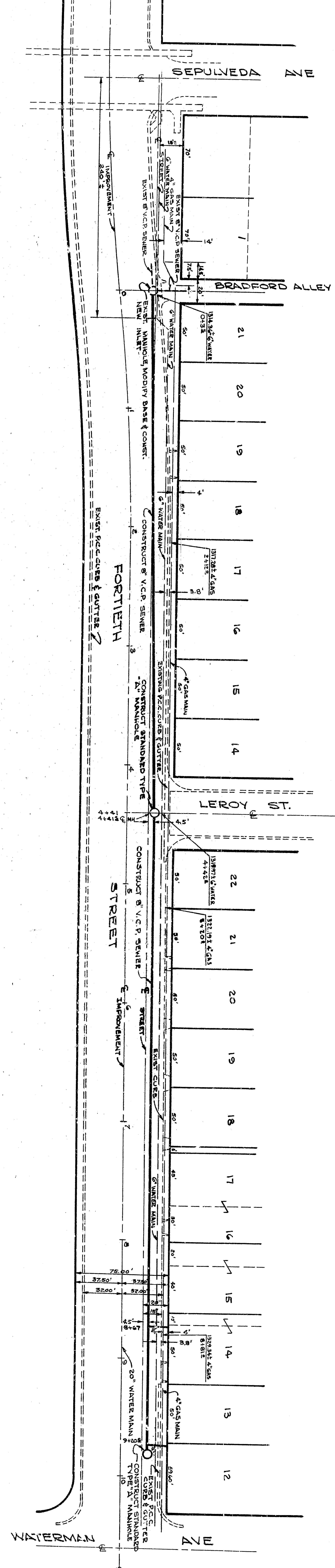
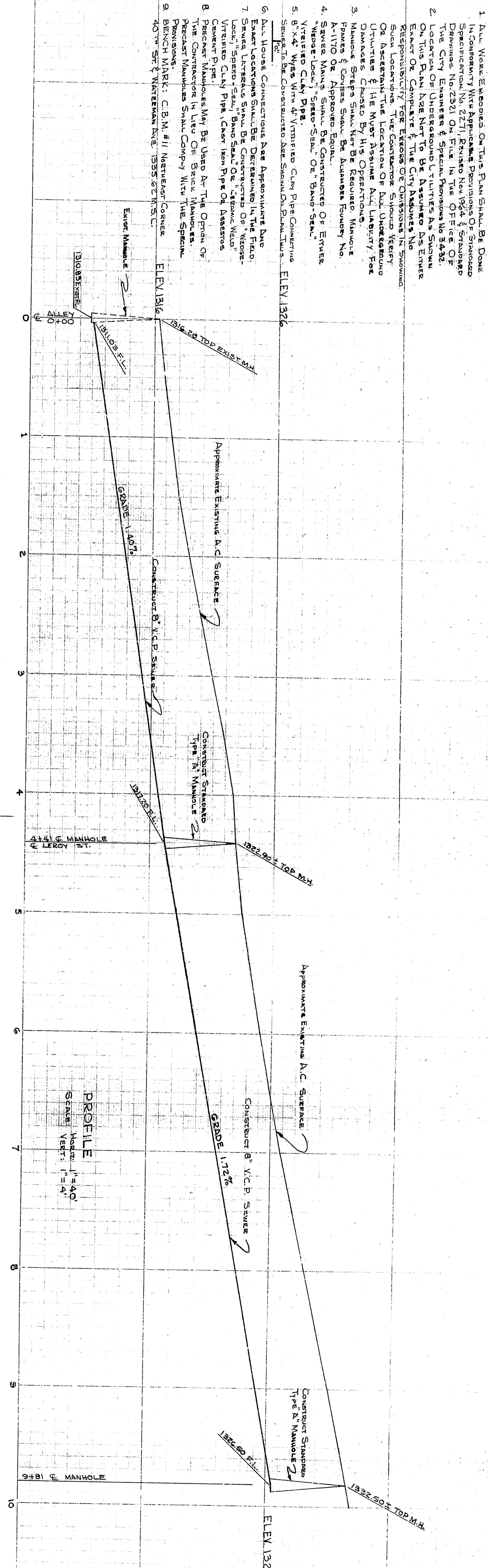
1. All Work Evidenced On This Plan Shall Be Done In Accordance With Applicable Ordinances & Standard Specifications, No. 2211, Part 1, Section 104.01, Standard Specification No. 2321 On File In The Office Of The City Engineer & Special Provision No. 54.32.
2. Location Of Undersound Utilities As Shown On This Plan Are Not To Be Assumed As Either Exact Or Complete & The City Assumes No Responsibility For Errors Or Omissions In Showing Such Locations. The Contractor Should Verify Or Ascertain The Location Of All Undersound Utilities & He Must Assume All Liability For Utilities Struck By His Operations.
3. Manhole Structures To Be Constructed Shall Conform To Appropriate Manual A-1110 Or Approved Equal.
4. Sewer Manholes Shall Be Constructed Of Either "Water-Loose," "Splice-Steel" Or "Band-Steel," Vertical Clay Pipe.
5. 6" x 4" Wyes With 4" Vertical Clay Pipe Connecting Sewer To Be Constructed As Shown On B.M. 1326.
6. All House Connections Are Approximate And Exact Locations Shall Be Determined In The Field. Local "Splice-Steel" Band Steel Or "Water-Loose" Vertical Clay Pipe (Cast Iron Pipe Or Approved Cement Pipe).
7. Precast Manholes May Be Used As The Option Of The Contractor In Lieu Of Band Manholes. Precast Manholes Shall Conform With The Specifications.
8. BENCH MARK: C.B.M. #11 NEAR EAST CORNER 40TH ST & WATERMAN AVE. 1935 G.T.M.S.C.



APPROVED: *[Signature]* 1944
 REGISTERED CIVIL ENGINEER NO. 13455
 DRAWING NO. 34-32
 CHECKED BY: *[Signature]*
 SHEET 1 OF 1 RECOMMENDED
CITY OF SAN BERNARDINO
 DEPT. OF PUBLIC WORKS
SEWER EXTENSION
FORTIETH STREET
 FROM BRADFORD ALLEY TO WATERMAN AVE.

GENERAL NOTES:

1. All Work Evidenced on this Plan Shall Be Done in Accordance with the Specifications of Standard Specifications for Public Works of the State of California, 1935 Edition, Part 1, Division 1, Section 101.00, and the City Engineer's Specifications, No. 2321, On File in the Office of the City Engineer & Special Provisions No. 5432.
2. Location of Underpass Utilities, As Shown on this Plan, Are Not to Be Assumed As Exact or Complete & the City Assumes No Responsibility for Errors or Omissions in Showing Such Locations. The Contractor Should Verify or Ascertain the Location of All Underpass Utilities & He Must Assume All Liability for Underpass Structures & for Any Damage to Same Caused by the Construction of this Sewer.
3. Manhole Structures to Be Constructed in Accordance with the Specifications of the City Engineer & Approved Equal.
4. Sewer Manholes Shall Be Constructed of Either "Water-Loose" "Steel-Set" or "Band-Set" "Water-Tight" Clay Pipe Connections.
5. 6" x 6" Wyes with 4" Vertical Clay Pipe Connections Shall Be Constructed and Shown on this Plan.
6. All House Connections Are Approximately One Foot Below Ground Surface.
7. Exact Locations Shall Be Determined in the Field. Local "Sewer" Maps of the City of Waterman, California, Shall Be Used as a Guide in the Location of Waterman Clay Pipe. Careless Use of Assessor's Censor Pipe.
8. Precast Manholes May Be Used at the Option of the Contractor in Lieu of Brick Manholes. Precast Manholes Shall Comply with the Specifications.
9. BENCH MARK: C.B.M. #11 NEAR EAST CORNER 40th ST & WATERMAN AVE. 1935 G.T.M.S.C.



APPROVED: *[Signature]* 1944
 REGISTERED CIVIL ENGINEER NO. 13455
 DRAWING NO. 3432
 CHECKED BY: *[Signature]*
 SHEET 1 OF 1 RECOMMENDED
CITY OF SAN BERNARDINO
 DEPT. OF PUBLIC WORKS
SEWER EXTENSION
FORTIETH STREET
 FROM BRADFORD ALLEY TO WATERMAN AVE.